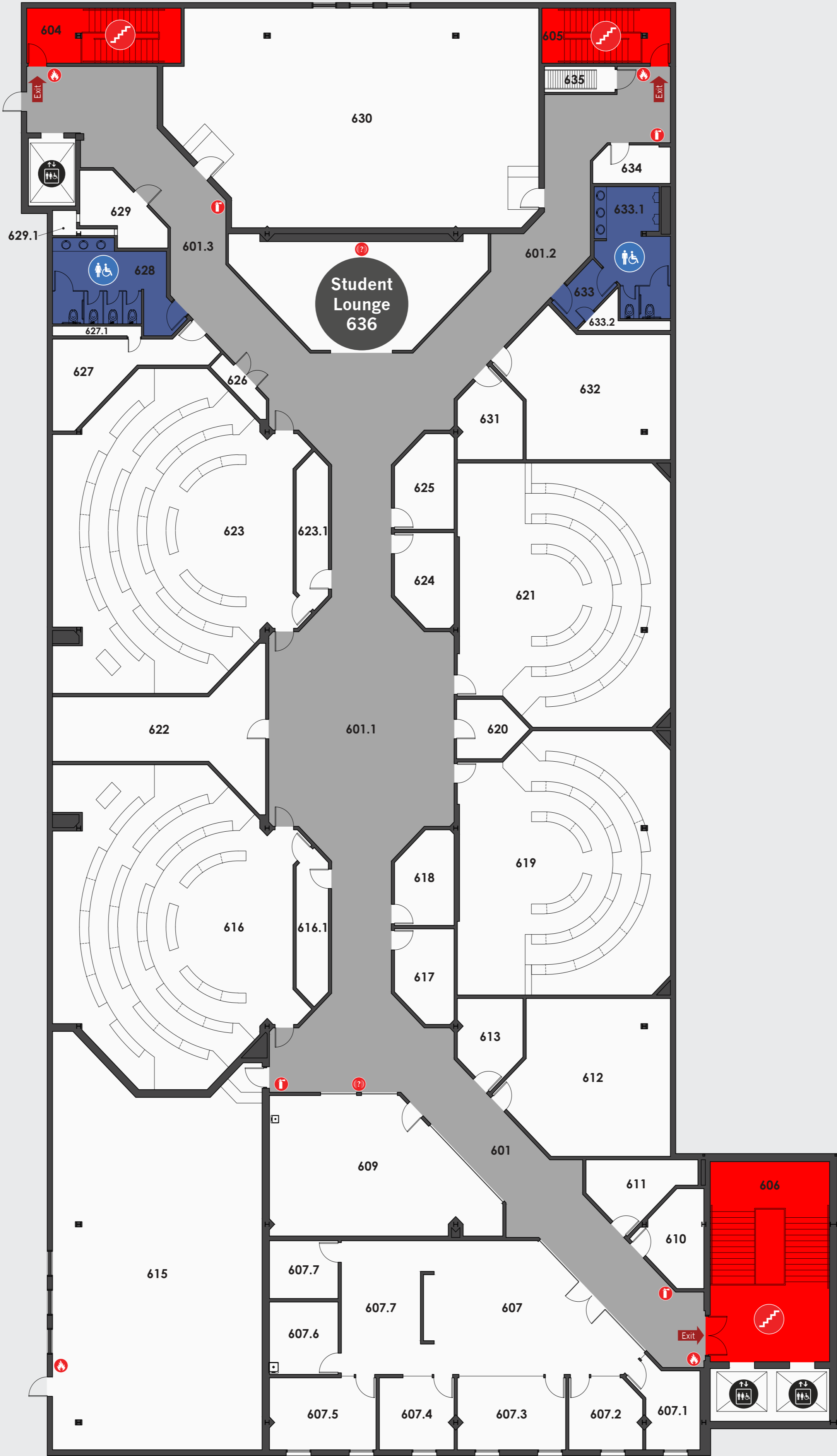




# Education Building



Floor 6



Emergency Evacuation Procedures

- 1. Activate the nearest fire alarm pull station along exit path.
- 2. Take coat and keys if immediately available.
- 3. Evacuate building through the nearest exit. Use stairs, do not use elevators.
- 4. Close all doors along exit route. Do not lock doors.
- 5. Move away from building and proceed to assembly point.

If you have information regarding the emergency call Protective Services at 306-585-4999.

Colour Legend

- Exit Corridor
- Exit Stair
- Washroom

Symbol Legend

- |                            |                 |                                |                     |                         |
|----------------------------|-----------------|--------------------------------|---------------------|-------------------------|
| Female Accessible Washroom | Female Washroom | All Gender Accessible Washroom | Exit Stairs         | Fire Alarm Pull Station |
| Male Accessible Washroom   | Male Washroom   | All Gender Washroom            | Fire Extinguisher   | Emergency Notification  |
| Elevator                   | Recycling       | Food Services                  | Parking Pay Station | AED Location            |
| Telephone                  | Garbage         | Loading                        | Parkade Access      |                         |