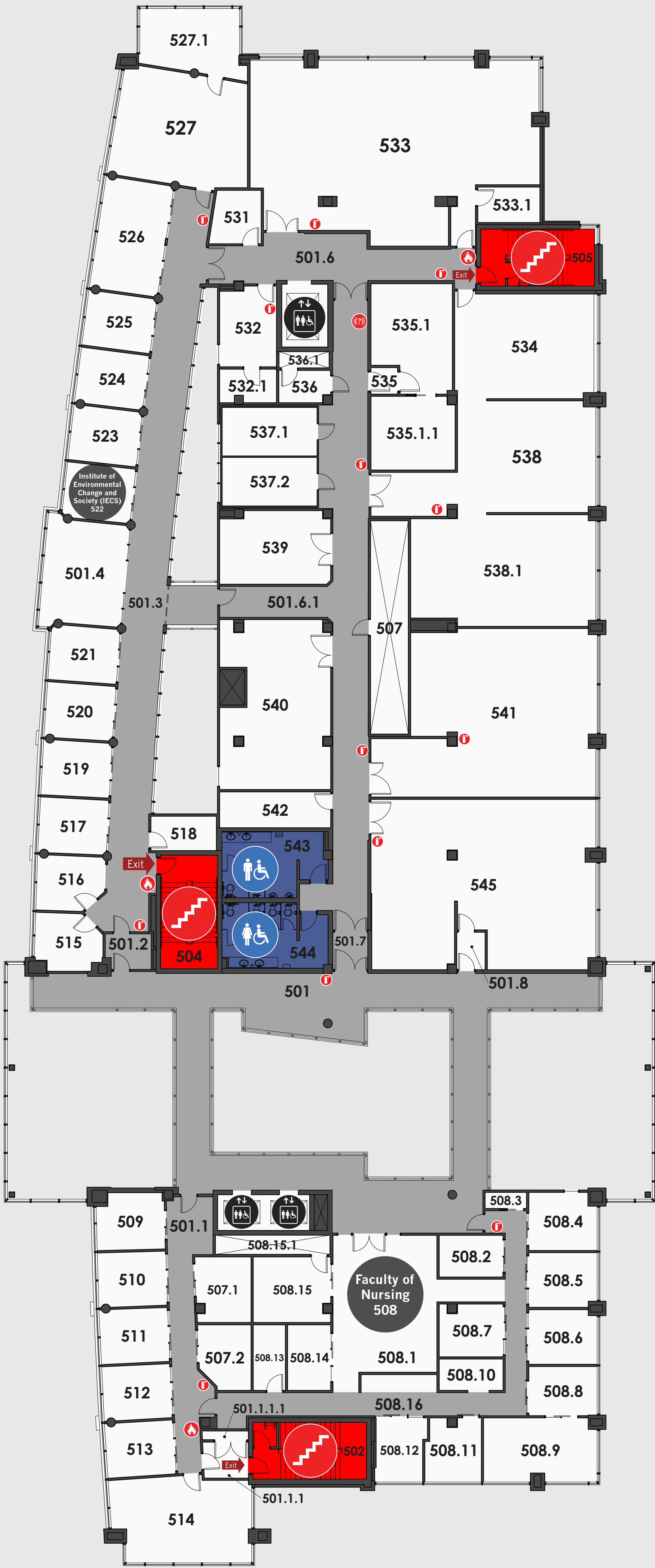




Research and Innovation Centre



Floor 5



Emergency Evacuation Procedures

- 1. Activate the nearest fire alarm pull station along exit path.
- 2. Take coat and keys if immediately available.
- 3. Evacuate building through the nearest exit. Use stairs, do not use elevators.
- 4. Close all doors along exit route. Do not lock doors.
- 5. Move away from building and proceed to assembly point.

If you have information regarding the emergency call Protective Services at 306-585-4999.

Colour Legend

- Exit Corridor
- Exit Stair
- Washroom

Symbol Legend

- | | | | | |
|----------------------------|-----------------|--------------------------------|---------------------|-------------------------|
| Female Accessible Washroom | Female Washroom | All Gender Accessible Washroom | Exit Stairs | Fire Alarm Pull Station |
| Male Accessible Washroom | Male Washroom | All Gender Washroom | Fire Extinguisher | Emergency Notification |
| Elevator | Recycling | Food Services | Parking Pay Station | AED Location |
| Telephone | Garbage | Loading | Parkade Access | |