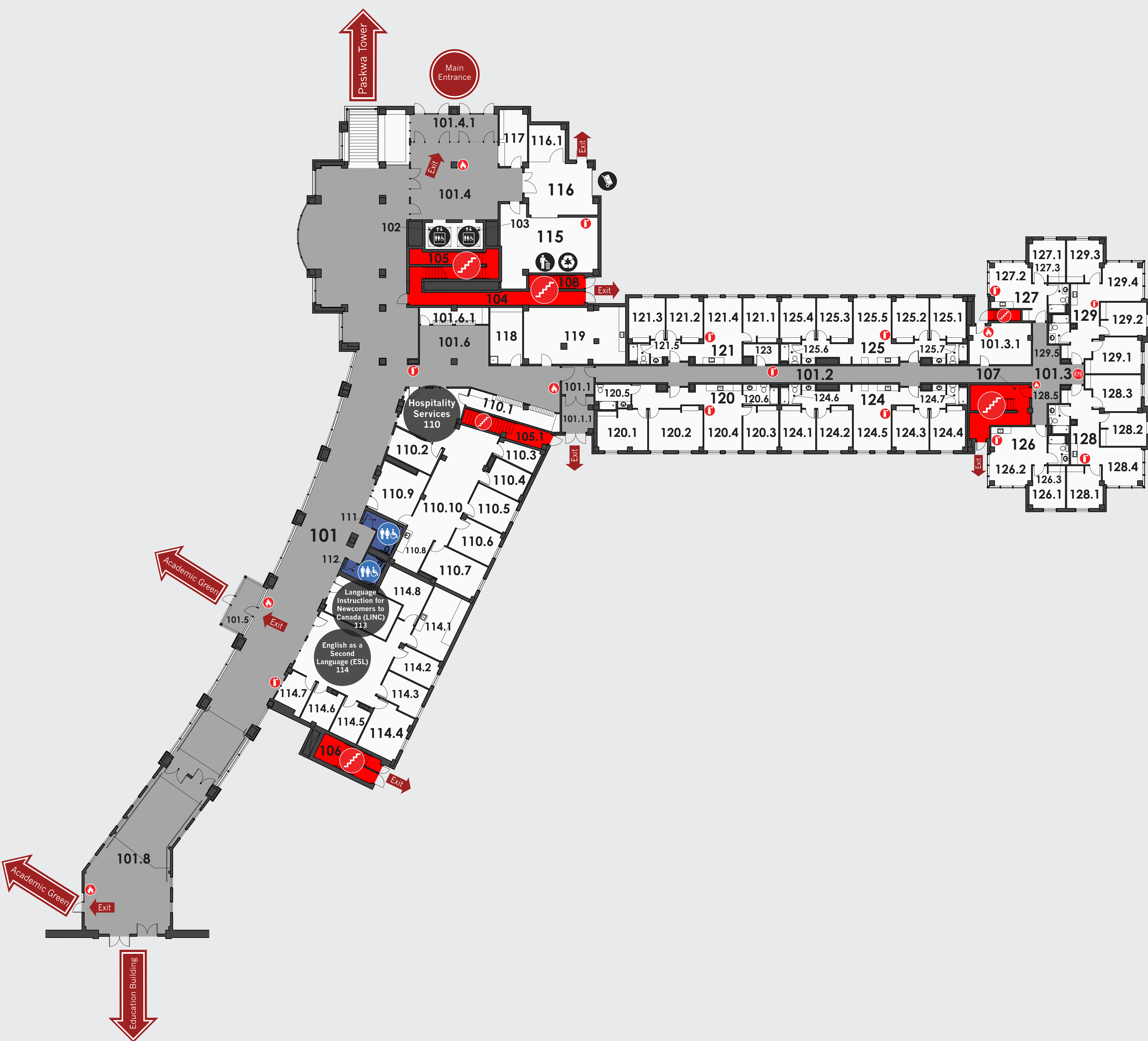




Wakpá Tower



Floor 1



Emergency Evacuation Procedures

1. Activate the nearest fire alarm pull station along exit path.
2. Take coat and keys if immediately available.
3. Evacuate building through the nearest exit. Use stairs, do not use elevators.
4. Close all doors along exit route. Do not lock doors.
5. Move away from building and proceed to assembly point.

If you have information regarding the emergency call Protective Services at 306-585-4999.

Colour Legend

- Exit Corridor
- Exit Stair
- Washroom

Symbol Legend

- | | | | | |
|----------------------------|-----------------|--------------------------------|---------------------|-------------------------|
| Female Accessible Washroom | Female Washroom | All Gender Accessible Washroom | Exit Stairs | Fire Alarm Pull Station |
| Male Accessible Washroom | Male Washroom | All Gender Washroom | Fire Extinguisher | Emergency Notification |
| Elevator | Recycling | Food Services | Parking Pay Station | AED Location |
| Telephone | Garbage | Loading | Parkade Access | |