

# REGINA RDC NEWSLETTER

## SEPTEMBER 2025



University of Regina Research Data Centre Newsletter

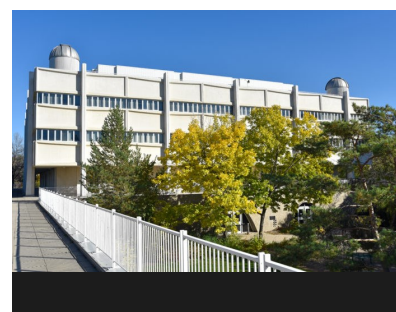
September 2025

## HELLO FALL!

Welcome to the Regina RDC Newsletter where we will share news and announcements including educational and funding opportunities, new datasets released in the RDC, new initiatives from Statistics Canada and more! Please share this with your network!

### In This Issue

- [News & Announcements](#)
- [Workstation Bookings](#)
- [Reminders](#)
- [Regina RDC Projects](#)
- [New Datasets in the RDC](#)
- [Hours & Closures](#)



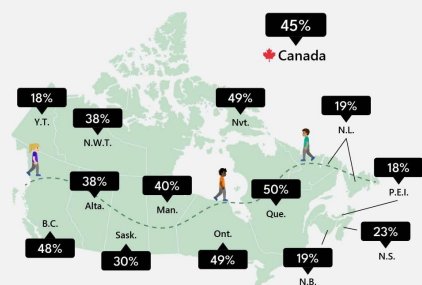
### Where to find us?

Room 330.2  
Classroom Building,  
3707 Sureau Loop,  
University of Regina

### Where to learn more?

- [About the Regina RDC](#)
- [Our data holdings](#)
- [How to apply for access](#)
- [Publications across the network](#)
- [Rich Data Services](#)

**About 45% of Canadians have access to at least one grocery store within a 15-minute walk.**



Source: Spatial Accessibility Measures: 2024 Update.

Statistics Canada / Statistique Canada

Canada

**75% of Canada's population can access a healthcare facility within 90 minutes using public transit.**

Source: Spatial Accessibility Measures: 2024 Update.



Statistics Canada / Statistique Canada

Canada

## News & Announcements

Population Data BC is offering the following **online** health data analytic courses in **September**:

- **PHDA 01**: Working with Administrative Data
- **PHDA 03**: Population Health and GIS

Register for the **CRDCN-StatCan Open Mic Data Series [here](#)**. Topics include: Indigenous Peoples (**Sept 25**) and T1 Tax File (**Oct 9**).

The **CRDCN Emerging Scholars Grant** is due **November 30** (\$1,200). More information and application available [here](#).

Listen to the newest episode of StatCan's **Eh Sayers** podcast, *Canadians Just Aren't California Dreamin' These Days*, [here](#).

**Questions about the vRDC?** View **information** from the CRDCN [here](#).

The CRDCN provides messaging for researchers to **recognize the contributions of funders that enable data accessibility**. Please ensure to include the [acknowledgment and accessibility messaging](#) in your submitted articles/theses.

### Welcome!

As of July 1, Dr. Rozzet Jurdi-Hage has completed her term as Academic Director (AD). The VP Research has appointed **Dr. Harminder Guliani** as the RDC's new AD!

Dr. Guliani is an Associate Professor and Undergraduate Program Coordinator in Economics at the University of Regina. She is no stranger to the RDC program, most recently acting as the RDC's interim AD from July to December 2024.



## Workstation Bookings

Active Researchers are automatically added to our online booking system and will receive an email with further instructions. Bookings must be made **prior to when you access the RDC**.

### Reminders

1. If you need any files (e.g. notes, syntax) uploaded to your project folder, please send them to [regina.rdc@uregina.ca](mailto:regina.rdc@uregina.ca) at least one (1) business day in advance
2. Any requests for the release of files (e.g., notes, statistical output) from the RDC will not be reviewed until an RDC Analyst is available. Please ensure your timelines account for this and communicate any deadlines with RDC staff well in advance.
3. We continue to ask those that are feeling ill to stay home

**SPOTS STILL  
AVAILABLE!!**

# OPENING DOORS TO DATA



**CRDCN Cross-Country Tour**

**University of Regina  
Regina, Saskatchewan**

## **Research-policy nexus session**

A collaborative 60-minute session connecting CRDCN researchers with provincial policy leaders to explore solutions to shared priorities. Includes an open mic to surface key issues for future discussion.

**9AM - 12PM, Wednesday, September 17, 2025**

## **Training session**

A 90-minute session using real-world examples on making restricted data FAIR. Learn how to boost transparency in restricted data research and advocate for better discoverability.



**CRDCN** Canadian Research Data  
**RCCDR** Centre Network  
Réseau canadien des Centres  
de données de recherche

[crdcn.ca](https://crdcn.ca)

# We're Moving!

We said goodbye to the original Regina RDC location at #2 Research Drive at the end of July 2025. Construction is currently ongoing at our new Classroom Building location and we anticipate re-opening in mid-September. Please keep an eye on our calendar and booking system for updates.

We thank you for your patience and are excited to share our new space with you!

## OUT WITH THE OLD...



## IN WITH THE NEW (COMING SOON!)...



# NEW DATASETS IN THE RDC

## ANNUAL SURVEY OF MANUFACTURING AND LOGGING INDUSTRIES 2023

The [Annual Survey of Manufacturing and Logging Industries \(ASML\)](#) is a survey of the manufacturing and logging industries in Canada. It is intended to cover all establishments primarily engaged in manufacturing and logging activities as well as some sales offices and warehouses which support these establishments.

## BUSINESS RESEARCH MICRODATA 2022

The **Business Research Microdata (BRM)** provides a set of 'core' firm level variables that are able to satisfy the economic questions their projects seek to answer. These include variables from the balance sheet, statements of income, employment slips, etc. of enterprises in Canada.

## CANADIAN HEALTH MEASURES SURVEY BIOBANK: BIOMONITORING OF ENVIRONMENTAL CHEMICALS

The biomonitoring component of the [Canadian Health Measures Survey \(CHMS\)](#) measures many environmental chemicals and their metabolites in the blood and urine of survey participants.

## CANADIAN HEALTH SURVEY ON CHILDREN AND YOUTH 2023: CROSS SECTIONAL

The [Canadian Health Survey on Children and Youth \(CHSCY\)](#) explores issues that have an impact on the physical and mental health of children and youth, such as physical activity, the use of electronic devices, time spent in school and extracurricular activities, mental health, childhood experiences, suicidal thoughts, substance use and impact of the COVID-19 pandemic.

## CANADIAN INCOME SURVEY 2023

The [Canadian Income Survey \(CIS\)](#) is a cross-sectional survey developed to provide a portrait of the income and income sources of Canadians, with their individual and household characteristics.



# NEW DATASETS IN THE RDC

## CANADIAN SOCIAL SURVEY 2024 - QUALITY OF LIFE, HOUSING AND TRUST

The [Canadian Social Survey \(CSS\)](#) will collect information on a variety of social topics such as health, well-being, impacts of COVID-19, activities, time-use, emergency preparedness, quality of life, energy use, virtual health care and trust.

## CANADIAN SURVEY ON INTERPROVINCIAL TRADE 2023 *New!*

The [Canadian Survey on Interprovincial Trade \(CSIT\)](#) collects data on the trade of goods and services across provincial and territorial borders, as well as labour mobility in Canada.

## INNOVATION IN THE FOOD PROCESSING INDUSTRY SURVEY 2023 *New!*

The [Innovation in the Food Processing Industry Survey \(IFPI\)](#) collects information on the nature and extent of product, process, marketing and organizational innovations in the Canadian food processing industry and on other emerging issues in the food processing industry.

## DISABILITY LABOUR MARKET INDICATORS 2022 & 2023

The [Labour Force Survey \(LFS\)](#) – Disability Labour Market Indicators (DLMI) describes the disability status of a sub-sample of respondents to the Labour Force Survey are available.

## NATIONAL TRAVEL SURVEY 2022 & 2023

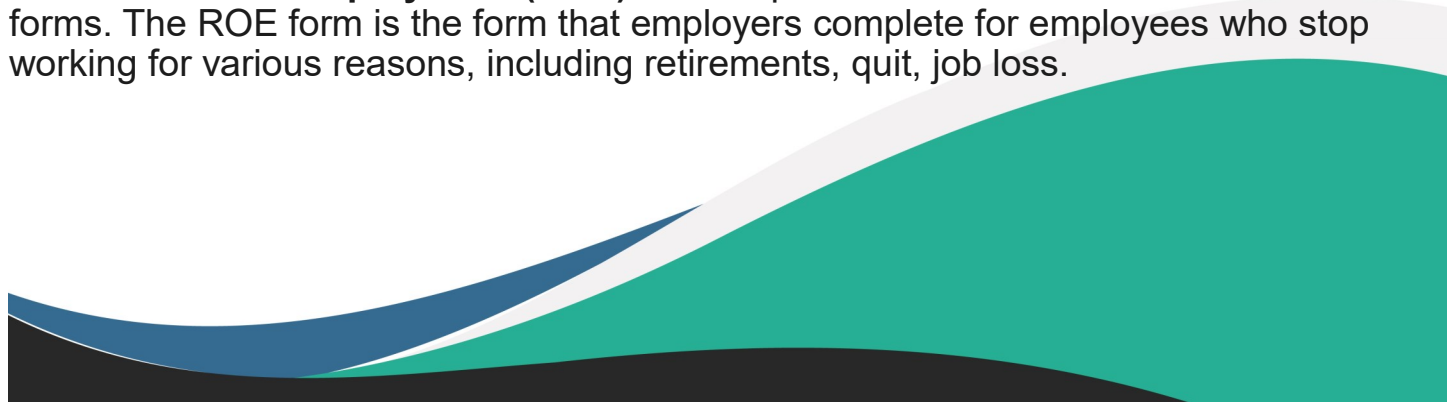
The [National Travel Survey \(NTS\)](#) provides statistics on the activities of Canadian residents related to domestic and international tourism. It was developed to measure the volume, the characteristics and the economic impact of tourism.

## PUBLIC SERVICE EMPLOYEE SURVEY 2024 *New!*

The [Public Service Employee Survey \(PSES\)](#) provides information to support the continuous improvement of people management practices in the federal public service.

## RECORDS OF EMPLOYMENT 2024

The **Records of Employment (ROE)** contain person-level information from ROE forms. The ROE form is the form that employers complete for employees who stop working for various reasons, including retirements, quit, job loss.



# NEW DATASETS IN THE RDC

## **RENTAL MARKET SURVEY 2024 *New!***

The **Rental Market Survey (RMS)** collects a core set of data on vacant units, rents, and universe counts by bedroom type, and by age, size and type of structure.

## **SURVEY OF INNOVATION AND BUSINESS STRATEGY 2022**

The [Survey of Innovation and Business Strategy \(SIBS\)](#) collects information on the strategic decisions, innovation activities, operational tactics and global value chain activities of businesses in Canada.

## **SURVEY OF EMPLOYERS ON WORKERS' SKILLS 2021 *New!***

The [Survey of Employers on Workers' Skills \(SEWS\)](#) collects information from businesses on issues of skills requirements and skills development, as well as on the strategies deployed to mitigate the consequences of skill gaps within their businesses.

## **SURVEY ON GIVING, VOLUNTEERING AND PARTICIPATING 2023**

The [Survey on Giving, Volunteering and Participating \(SGVP\)](#) provides a comprehensive overview of the contributions Canadians have made by donating their time and money; it also provides data-driven information to the non-profit sector to help organizations strengthen their capacity for action, mobilize funds, recruit volunteers and manage their operations.

## **SURVEY SERIES ON FIRST NATIONS PEOPLE, MÉTIS AND INUIT 2024 – EMERGENCY PREPAREDNESS AND EXTREME WEATHER *New!***

The [Survey Series on First Nations People, Métis, and Inuit \(SSFNPMI\)](#) is a panel of short surveys on First Nations people living off reserve, Métis and Inuit who had previously agreed to participate in follow up surveys.

## **SURVEY SERIES ON FIRST NATIONS PEOPLE, MÉTIS AND INUIT 2024 - WELL-BEING AND IMPACTS OF RISING PRICES *New!***

The [Survey Series on First Nations People, Métis, and Inuit \(SSFNPMI\)](#) is a panel of short surveys on First Nations people living off reserve, Métis and Inuit who had previously agreed to participate in follow up surveys.





## HOURS, CLOSURES & CHANGES

Please note the following changes and closures.

Updates are also available [here](#) and on our online booking system.

### September Hours

Monday	Tuesday	Wednesday	Thursday	Friday
CLOSED	CLOSED	8:30 - 4:30	CLOSED	CLOSED

### Contact Us

Academic Director:

[Dr. Harminder Guliani](#)

Room 330.2

Classroom Building,  
3707 Sureau Loop,  
University of Regina

\*By appointment only\*

306-585-4RDC (4732)

[regina.rdc@uregina.ca](mailto:regina.rdc@uregina.ca)

[www.uregina.ca/research/rdc](http://www.uregina.ca/research/rdc)



University  
of Regina

