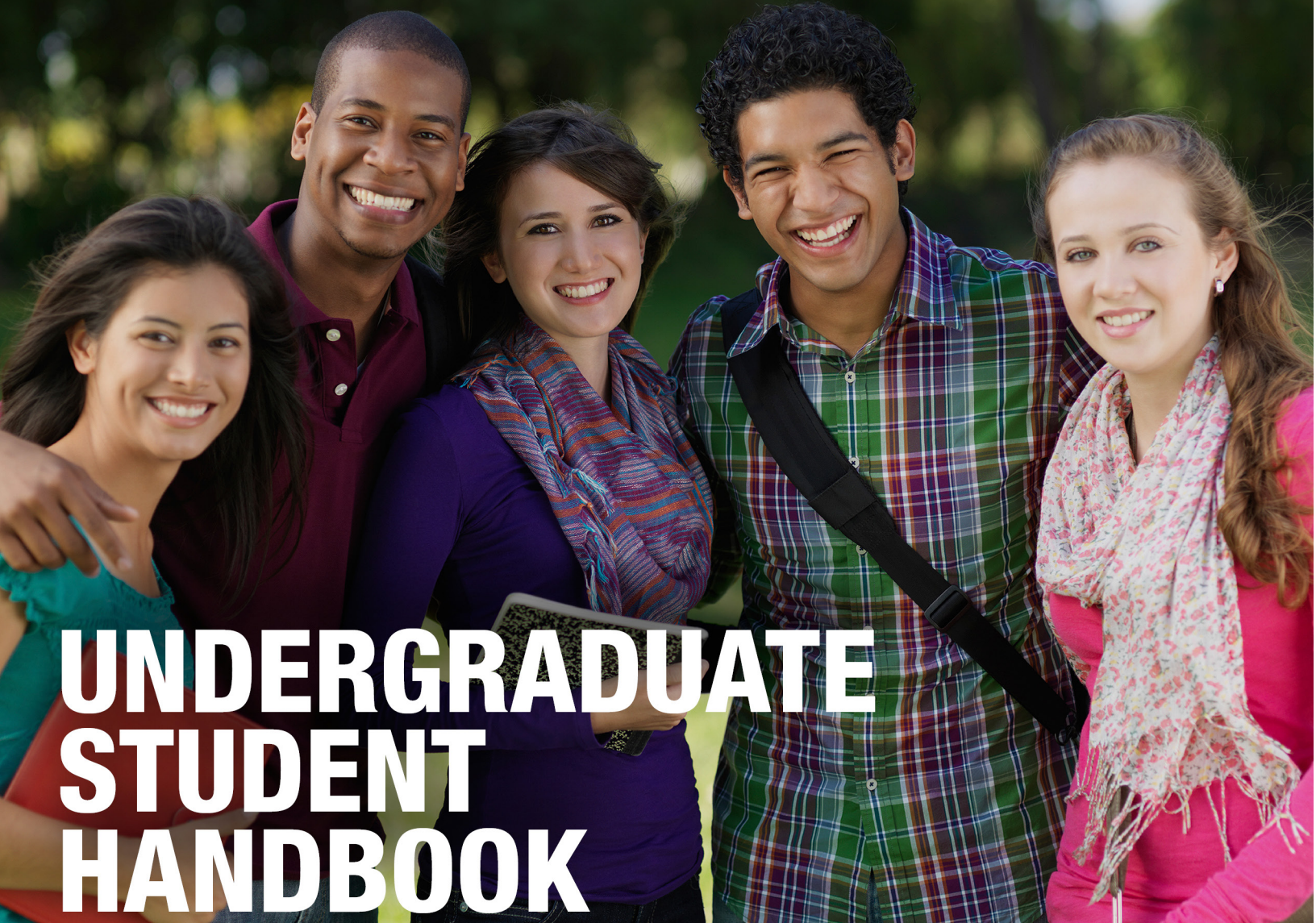




University
of Regina



UNDERGRADUATE STUDENT HANDBOOK

2021-22



Faculty of
SOCIAL WORK

www.uregina.ca/socialwork

WELCOME TO FACULTY OF SOCIAL WORK! CONGRATULATIONS ON TAKING THE FIRST STEPS TOWARD EARNING A BACHELOR OF SOCIAL WORK DEGREE AT THE UNIVERSITY OF REGINA. THIS STUDENT HANDBOOK IS DESIGNED TO ASSIST YOU IN YOUR TRANSITION TO OUR PROGRAM.



03

**Section 1
Pre-Social Work Students**



06

**Section 2
Bachelor of Social Work Students**



09

**Section 3
Faculty Regulations and Information**



13

**Section 4
General Information**

Our Mission Statement

The social work program of education, research and community service is designed to prepare students for critical generalist social work practice with diverse peoples. Informed by the principles of indigenization, sustainability and social justice, the social work program encourages students to identify the needs of the disadvantaged, marginalized and oppressed. It supports students in developing the commitment, knowledge, values, attitudes, and skills required to confront structural inequalities, and to empower individuals, families, and communities to realize their full potential."

SECTION

1

Pre-Social Work Students

YOUR NEXT STEP: PRE-SW GROUP ADVISING

It is very important that you attend new pre-social work student group advising, and we strongly recommend you do this prior to registering in classes.

REGINA & SASKATOON:

Please visit the [Course Registration Days](#) event listing online for details on how to sign up! New Pre-Advising is held in-person or remotely, starting in April, as part of U of R's events for new fall students. If you are beginning in Winter, you may attend the online version of this session instead!

ONLINE:

For off-campus students, or anyone who cannot attend in person / remotely for the Regina/Saskatoon events, New Pre-SW Student Advising is delivered online as well! To sign up, please visit our [website!](#)

Fall Term - group advising sessions will be held from May to August

Winter Term - group advising sessions will be held from October to December

PREPARING FOR THE PRE-SW PROGRAM

Before you start in this program, we recommend that you review these resources on our website:

1. [Pre-Social Work Advising \(video\)](#)
2. [Applying to the BSW \(video\)](#)
3. [Exploring Social Work \(video\)](#)

It is important that you set up your University of Regina e-mail account. To find your username and password please click [Webmail](#) on the University of Regina homepage.

It is recommended that you read at least some parts of the University of Regina [Undergraduate Calendar](#), and the '[academic schedule](#)' ideally before coming for academic advising, particularly the following sections:

Class Registration & Withdrawal

Tuition & Fees

Student Code of Conduct & Right to Appeal

Academic Regulations

General Information for Students

Faculty of Social Work

WHAT ARE THE PRE-SOCIAL WORK PROGRAM REQUIREMENTS?

Students in Pre-Social Work are required to complete 30 university credit hours (10 courses), including ENGL 100, INDG 100, PSYC 101, SOC 100 and SW 100 (this includes transfer credit equivalents). As part of your 10 courses, we recommend registering in SW 202. These Pre-Social Work requirements contribute to the 120 credit hour (four year) Bachelor of Social Work degree program.

Note: Students in Pre-Social Work are not permitted to take any 300- or 400-level Social Work courses. To register in 300- and 400-level Social Work courses at the U of R, you must first be admitted to the Bachelor of Social Work Program. You can apply for admission to the Bachelor of Social Work Program after completing the Pre-Social Work Program requirements.

You will need to attain a GPA of at least 70% while in the Pre-Social Work Program.

PRE-SOCIAL WORK: FIRST YEAR COURSE RECOMMENDATIONS

The following are recommended first year courses for Pre-Social Work students:

FALL

ENGLISH 100

INDIGENOUS STUDIES 100

PSYCHOLOGY 101

SOCIOLOGY 100

WINTER

ENGLISH 110

SOCIOLOGY 200 LEVEL

EITHER SEMESTER

SOCIAL WORK 100

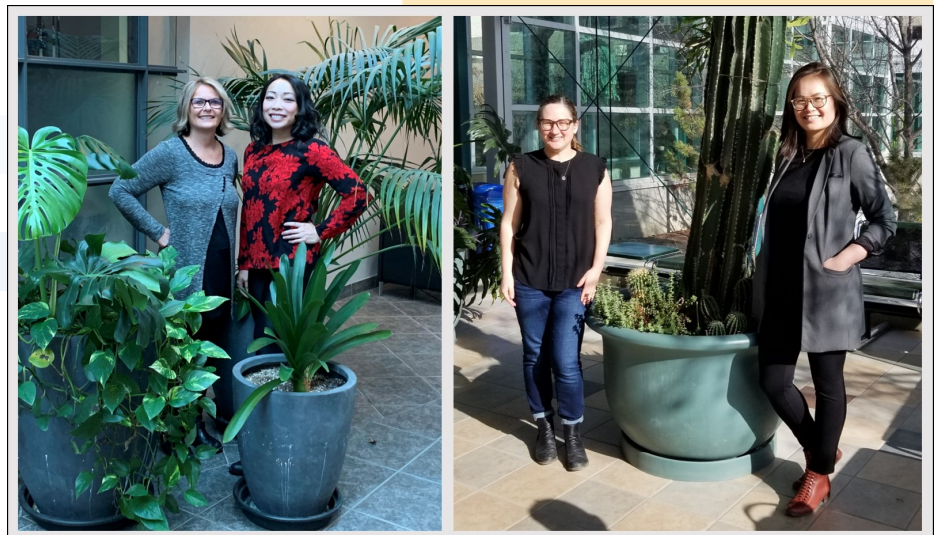
SOCIAL WORK 202

OPEN ELECTIVE

OPEN ELECTIVE

Ideas for Open Electives:

- ✓ *Anthropology 100*
- ✓ *Economics 100*
- ✓ *Justice Studies 100*
- ✓ *Philosophy 100 or 150*
- ✓ *Psychology 310*
- ✓ *Political Science 100*
- ✓ *Indigenous Studies 260 or 262*
- ✓ *Religious Studies 100*
- ✓ *Social Studies 201*



Our academic advisors are available to assist you with course selections

**APPLICATION TO THE BACHELOR OF
SOCIAL WORK PROGRAM**

There is a separate Faculty of Social Work competitive application process to gain admission into the Bachelor of Social Work (BSW) program. To be eligible for application, your Pre-Social Work program requirements must be completed by April 30th of the application year (at the latest). The BSW program application deadline date is **January 15th** of each year. Admission decisions will be based on a combination of: completion of the Pre-Social Work program, assessment of details related to your work, volunteer/community experiences and personal statement, as well as your GPA ranking.

Additional information can be found on [our website](#) including the BSW application and admission requirements, as well as details on course requirements, registration, and academic advising. Please note that the **BSW Application is available between Oct. 1st and Jan. 15th for online submission only.**

Academic Advisors in the Faculty of Social Work host application information sessions beginning in October of each year to help guide you through the application process (see our events calendar online for details).



SECTION

2

Bachelor of Social Work Students



YOUR NEXT STEP: SW 099 - BSW ORIENTATION

Students admitted to the BSW program through our admission process will be asked to attend a BSW Student Advising Seminar in March, and will be required to complete the SW 099 BSW Orientation modules on UR Courses. Students will gain access to the modules in June, and must complete them prior to the Fall term.

BSW STUDENT ADVISING SEMINAR

Please refer to the [events calendar](#) on our website for details and to sign up for a session.

SW 099:

Details about this course will be included in your BSW Admission letter. Completion of all modules will be required to register in the Winter term. Topics covered in SW 099 include: academic integrity, professional suitability, practicum, academic regulations and more!

WHAT ARE THE BACHELOR OF SOCIAL WORK COURSE REQUIREMENTS?

GENERAL UNIVERSITY STUDIES SECTION

ENGL 100	3
ENGL 110	3
INDG 100	3
INDG LV 200 or higher <i>(260/262 Recommended)</i>	3
PSYC 101	3
SOC 100	3
SOC LV 200 or higher	3
SOC LV 200 or higher	3
WGST 100	3
10x OPEN ELECTIVES	30

SOCIAL WORK STUDIES SECTION

SW 100	3
SW 202	3
SW 346	3
SW 347	3
SW 350	3
SW 390	3
SW 405	3
SW 421	3
SW 451	3
SW 460	3
SW 469	3
3x SW ELECTIVES (SW or INSW)	9
SW 348	6
SW 448	15

TOTAL: 57

TOTAL: 63

These course requirements are reflected in the current Undergraduate Calendar, and are subject to change in next year's version. Courses taken during Pre-Social Work are included in the Bachelor of Social Work program.

EXPERIENTIAL LEARNING: PRACTICUM

[Practicum](#) is an exciting part of the BSW program. It provides practical experience in an agency working in your chosen profession. Practicum is significant as it constitutes nearly twenty percent of the BSW, and more than a third of the Social Work credit hours you will take during the program. The practicum portion of the BSW consists of SW 348 and SW 448, and it is recommended that you take both practica in the final year of the program: SW 348 in the first semester, and SW 448 in the second semester.

It is very important to do volunteer work throughout your BSW program as it provides you with an opportunity to determine the population you want to work with, and gives you practical experience that may make it easier during the practicum placement process. When you are nearing practicum, you will apply for a placement, and then attend a practicum information session (dates/times are posted on our events calendar online). As a general guideline:

WINTER PLACEMENT:

May 15th – submit your practicum application

June 30th – submit your international practicum portfolio (only if taking SW 448 internationally)

January – begin your practicum placement

FALL PLACEMENT:

January 15th – submit your practicum application

March 31st – submit your international practicum portfolio (only if taking SW 448 internationally)

September – begin your practicum placement

Practicum placements are available in a diverse range of practice settings, including direct practice, policy, community development, and research. Within these areas of practice students may be placed in government or community-based agencies, in locations throughout the province, country and internationally, and across a variety of fields including health care, social services, education, and corrections.

As part of the placement process, students will be guided through a series of steps aimed at identifying the types of placement settings that interest them, the geographic location(s) they are seeking, as well as the communities or populations that they hope to work with during their practicum placements.

SW 348 – PRACTICUM 1

Prerequisites:

- 5 SW courses including SW 100, SW 346 and SW 390.
- A minimum 70% GPA on the SW Studies Section of the BSW

Typically 2 days per week for 15 weeks;
230 hours in placement;
Bi-weekly seminars;
No mid-term break;
Saskatchewan only
6 Credit Hours

SW 448 – PRACTICUM 2

Prerequisites:

- 10 Required SW courses (SW 100, 202, 346, 347, 350, 390, 421, 451, 460, 469)
- Practicum 1 (SW 348)
- A minimum 70% GPA on the SW Studies Section of the BSW

Typically 4 days per week for 16 weeks;
470 hours in placement;
Bi-weekly seminars;
No mid-term break;
Saskatchewan, Out-of-Province or International
15 Credit Hours

STUDENT MEMBERSHIP IN SASK. ASSOCIATION OF SOCIAL WORKERS

The Saskatchewan Association of Social Workers (SASW) is a professional association and regulatory body. When you graduate, you will register with the SASW to work in Saskatchewan as a Registered Social Worker. Student members of the SASW join a network with social work professionals and future employers.

As a student member, you can access downloadable information from the Canadian Association of Social Work (CASW), you will receive the Canadian Social Work online journal, you will have the opportunity to attend and help plan events and activities, you will have access to the SASW Mentoring Program, you will be eligible for a free upgrade from student status to registered social worker status, plus many other benefits.

For more information, please see www.sasw.ca or e-mail sasw@accesscomm.ca.

Faculty Regulations and Information

STUDENT PROFESSIONAL SUITABILITY

The granting of a degree by the University of Regina constitutes acknowledgment that students are deemed qualified and suitable as social work practitioners upon graduation, and that they will conduct themselves in a professional and ethical manner. Unprofessional conduct by students may have direct repercussions for the people social workers serve and the profession of social work, as well as the Faculty of Social Work and the University.

Action may be taken any time a student (in Pre-Social Work or the BSW) is suspected of unsatisfactory performance of professional responsibilities. If an instructor, faculty member, Field Education Coordinator, Field Liaison, Field Instructor, other staff member or student identifies a student demonstrating unsatisfactory performance of professional responsibilities a complaint can be made in writing and submitted to the Dean of the Faculty of Social Work. All procedures for handling such complaints are outlined in our policy on [Student Professional Suitability](#).

Students may be required to discontinue from their program for reasons of unsatisfactory professional development.

ETHICAL USE OF SOCIAL MEDIA

Social Work students and professionals are increasingly using and relying upon social media; therefore, guidelines are necessary in order to protect us, and those with whom we work from potentially harmful consequences. Please refer to our policy on [Ethical Use of Social Media](#) for guidelines.

SOCIAL WORK STUDENT SOCIETY

The Social Work Student Society is a non-profit student run organization operating out of the University of Regina's Faculty of Social Work.

There are two Social Work Student's Societies (SWSS), one in Regina and the other in Saskatoon, each of which function as a venue for social work students to gather and pursue common goals and interests, with their ultimate aspiration being the realization of the values and aspects contained in our mission statement at the Faculty, University and community levels.

Section 3: Faculty Regulations and Information

The SWSS are always looking for new members, and everyone is welcome to attend meetings. To find out more information, please refer to [our website](#).

SASKATOON CAMPUS



At the University of Regina, students in Saskatoon who wish to complete the Bachelor of Social Work (BSW) or the Master of Social Work (MSW) degree enroll in Social Work courses at the Saskatoon Campus. Saskatoon Campus is housed within Innovation Place in the Concourse Building, which is located slightly north of the main University of Saskatchewan campus. Our Saskatoon Campus is equipped with a full complement of faculty and staff, including academic advisors and practicum personnel.

For full details on the [Saskatoon campus](#), please refer to our website, including the Saskatoon Campus Handbook.

OFF-CAMPUS LEARNING

In our Faculty we strive to make our social work programs accessible, with a particular emphasis on access throughout Saskatchewan as well as Northern Canada (with our program in the Yukon Territory).

Distance delivery of the BSW is generally available on a part-time study basis, but depending on course offerings, may be available full-time. What this means is there may be semesters in which it's possible to

Section 3: Faculty Regulations and Information

find a full-time course load of distance courses that fit your program, but there may also be semesters in which only 1-2 courses, or no courses fit your program needs as a distance student. This is particularly due to the fact that our part-time students are not taking courses as a cohort (or group), and are all at various stages in their programs.

Regional colleges throughout Saskatchewan offer face-to-face and/or live-streamed courses that contribute to the BSW degree, and it may be possible to complete the entire program through a Regional college, in combination with online and live-streamed courses delivered through the University of Regina's Centre for Continuing Education (Flexible Learning Division).

Currently the majority of the courses in our program can be obtained online / live-streamed, particularly the General University Studies courses; however, **we do not officially offer an 'online program'**. With regard to Social Work courses, there are generally a handful of courses offered online each semester. Notably, practicum placements (SW 348 and SW 448) and SW 390 are not available online, and the first practicum (in your final year) must be completed in Saskatchewan.

In the case that courses are not available at your study location, you have the option of commuting to our Regina or Saskatoon campuses for courses. It may be possible to take courses online through other institutions and transfer them in, as well. Our team of academic advisors will work closely with you to find all possible options for timely program completion.

DISTRIBUTING PERSONAL INFORMATION

Social Work Student Services does not distribute contact information for instructors or students. Instructors may be contacted via information provided to students in course syllabi online. Student contact information can only be provided with written consent from the individual student, using our authorization form.

MAXIMUM COURSE LOAD

A maximum course load is 5 classes per semester in Fall and Winter. Students have the option of taking courses in the Spring/Summer semesters as well, and the maximum is 2 classes in Spring and 2 classes in Summer. To ensure you complete your degree in 4 years, you would need to take 10 courses (or 30 credit hours) per year; however, you are not required to complete the program within 4 years. Many students take fewer than 10 courses per year. An academic advisor in the Faculty of Social Work can help you determine the best option for you and your situation.

FULL-TIME OR PART-TIME STUDIES

Students may choose to pursue the Bachelor of Social Work full-time or part-time:

Full-time (9-15 credit hours per semester); or

Part-time (3-6 credit hours per semester)

ACADEMIC ADVISING

Academic advisors are available in all faculties/colleges at the University of Regina. We are here to assist with your success as a university student. Academic advisors provide invaluable information regarding your academic program, and connect you to other student services available on campus that may help you become a more successful and confident student. We are your first stop when you have questions or problems in a class, if you are finding it difficult to balance your work-school-personal lives, or if you just need a friendly ear. Certainly we can assist with course selection, but more importantly we are your connection to the university system.

Academic advisors in the Faculty of Social Work are available to discuss:

Book Online!

- Course selection that aligns with your individual interests and aspirations
- Course sequencing, registration and planning a balanced schedule
- Preparation for applying to the BSW through our competitive admission process
- University of Regina policies and procedures, as well as academic rules and regulations governing your program
- Strategies for academic success including returning to good academic standing if you are on /at risk of academic probation, or returning from a period of discontinuance
- Academic options surrounding personal/family emergencies
- Convocation application deadlines and processes
- Services to help ease transition to the University of Regina and ensure success all the way to convocation



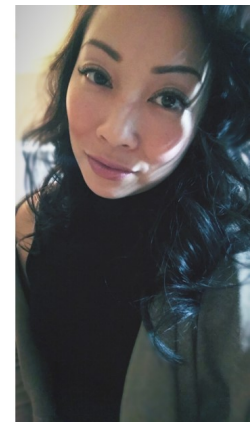
Thy-Thy Quach



Amanda Noubarian



Sally Machibroda



Carolyn Tran

NEW! Academic advising for Pre-Social Work students in Southern Saskatchewan (south of Davidson) is now delivered through the [Advising & Career Education Centre](#).

COURSES FROM OTHER INSTITUTIONS

Already taken courses? We will be working hard on assessing your transcripts for transfer credit as soon as we receive them. Note: if your courses are not in our database, we may require detailed course syllabi for a full assessment to be completed. We will request syllabi from you as needed, and in that case, your full assessment may take a number of weeks to be completed.

Planning to take courses, but unsure if they will transfer to the BSW? Our Academic Program Advisors can help with that! You may also wish to refer to the U of R [Transfer Credit Equivalent Guide](#).

General New Student Information



2021 FALL ORIENTATION

University of Regina Orientation aims to help new undergraduate students in a variety of ways, with the main goal of improving students' first experiences at this University. Orientation is designed to help new students familiarize themselves with the U of R and all that we have to offer.

For Fall 2021, Orientation will be delivered virtually through modules on UR Courses. Students will gain access to the modules in July. Note, there will be live orientation sessions in addition to the modules on August 27th. All new students are encouraged to attend!

For more information, please visit [Orientation page](#).

OTHER UPCOMING EVENTS

Are you interested in knowing what University and Faculty events are coming soon?

UNIVERSITY OF REGINA EVENTS: for information, please see: <https://www.uregina.ca/>

FACULTY OF SOCIAL WORK EVENTS: for information, please see: <https://www.uregina.ca/socialwork/>

STUDENT SUCCESS

At the University of Regina there is a whole team of support services that you can access to help ensure your academic success. Your academic advisor in the Faculty of Social Work can help connect you to resources at the Centre for Student Accessibility, Student Success Centre, Counselling Services, Career Centre, Ta-Tawâw Student Centre, Global Learning Centre and more!

IMPORTANT CONTACT INFORMATION

FEATURED CAMPUS SERVICES

Counselling Services	306-585-4491	
Centre for Student Accessibility	306-585-4691	
Advising & Career Education (ACE)*	306-585-4659	*advising for Pre-SW students in Southern SK
Student Success Centre	306-585-4076	
Information Services (technology)	306-585-4685	
Aboriginal Student Centre	306-337-3153	
Study Abroad & Global Learning Centre	306-337-2446	
Financial Aid & Scholarship Information	306-585-4591	

FACULTY OF SOCIAL WORK, STUDENT SERVICES OFFICE

For course registration, general information & academic advising appointments

REGINA CAMPUS

📍 3737 Wascana Parkway, Education Building,
University of Regina
Regina, SK S4S 0A2

☎ 306-585-4554

SASKATOON CAMPUS

📍 111-116 Research Drive,
The Concourse, Innovation Pl.
Saskatoon, SK S7N 3R3

☎ 306-664-7370