



University
of Regina

VIDEO:

Applying to the Bachelor of Social Work (BSW) Program

This video will provide an overview of the BSW Application. Note, application to the BSW is competitive as we regularly receive more applications than spaces available.



Faculty of
SOCIAL WORK

Pre-SW vs BSW

30 – Pre-SW
90 – BSW
<hr/>
120 - DEGREE

Pre-Social Work:

- Pre-SW Course Requirements: A **minimum of 30 credit hours (10 courses)** of university-level courses, which must be completed prior to admission to the BSW. Full-time students can complete the Pre-Social Work requirements in 1 year.
- Upon admission to the BSW, the Pre-Social Work courses will be used toward the Bachelor of Social Work program requirements.
- When eligible, students must apply for admission to the BSW.

Bachelor of Social Work:

- A total of 120 credit hours (33 courses, 2 practica), **including** the courses completed during Pre-Social Work. Full-time students can complete the entire BSW program in 4 years.

BSW Course Requirements

Credit Hours	General University Studies Courses	Credit Hours	Social Work Courses
3	English 100	3	SW 100
3	Indigenous Studies 100	3	SW 202
3	Sociology 100	3	SW 346
3	Psychology 101	3	SW 347
3	English 110	3	SW 350
3	Indigenous Studies 200 Level or Higher *	3	SW 390
3	Women's & Gender Studies 100	3	SW 421
3	Sociology 200 Level or Higher	3	SW 451
3	Sociology 200 Level or Higher	3	SW 460
30	Open Electives (10 courses)	3	SW 469
57	Total	3	One of SW405, SW480AI, INSW414 or INSW437
		9	SW Electives (3 courses)
		6	SW 348
		15	SW 448
		63	Total

Note: Pre-Social Work students are limited to taking a maximum of two social work courses: SW 100 & SW 202.

* INDG 260 or 262 are strongly recommended.

BSW Application Requirements

To apply to the BSW, students must have completed, or be in the process of completing, the following academic requirements:

- An overall average of **70%**
- **30 credit hours** (10 courses) of university credit including:
 - **ENGLISH 100**
 - **SOCIOLOGY 100**
 - **INDIGENOUS STUDIES 100**
 - **PSYCHOLOGY 101**
 - **SOCIAL WORK 100**

Applying to the BSW

- Application & Transcript deadline is January 15th
- Apply Online: www.uregina.ca/socialwork
- We strongly recommend that all students who are applying to the BSW in January plan to **participate in a 'prep' session**. Sessions are in a group setting, usually online, and are 1 hour in length. Sessions run from October to January. Dates and times can be found on the Faculty of Social Work's online events calendar.

Applying to the BSW

Applicants will be assessed on the following:

- Successful completion of Pre-Social Work requirements;
- Competitive application, submitted by the application deadline;
- Demonstration of commitment to, and experience in, human service. Reviewers will also assess writing skills, critical thought, self-awareness, ethics and values. This will be based on the applicant's:
 - work experience;
 - volunteer/community experience;
 - educational experience;
 - overall academic history;
 - personal statement;
 - overall student portfolio.

When to Apply?

15 credit hours

+

15 credit hours

= 30
Credit Hours

Fall Term

5 Classes

(15 Credit Hours)

Winter Term

5 Classes

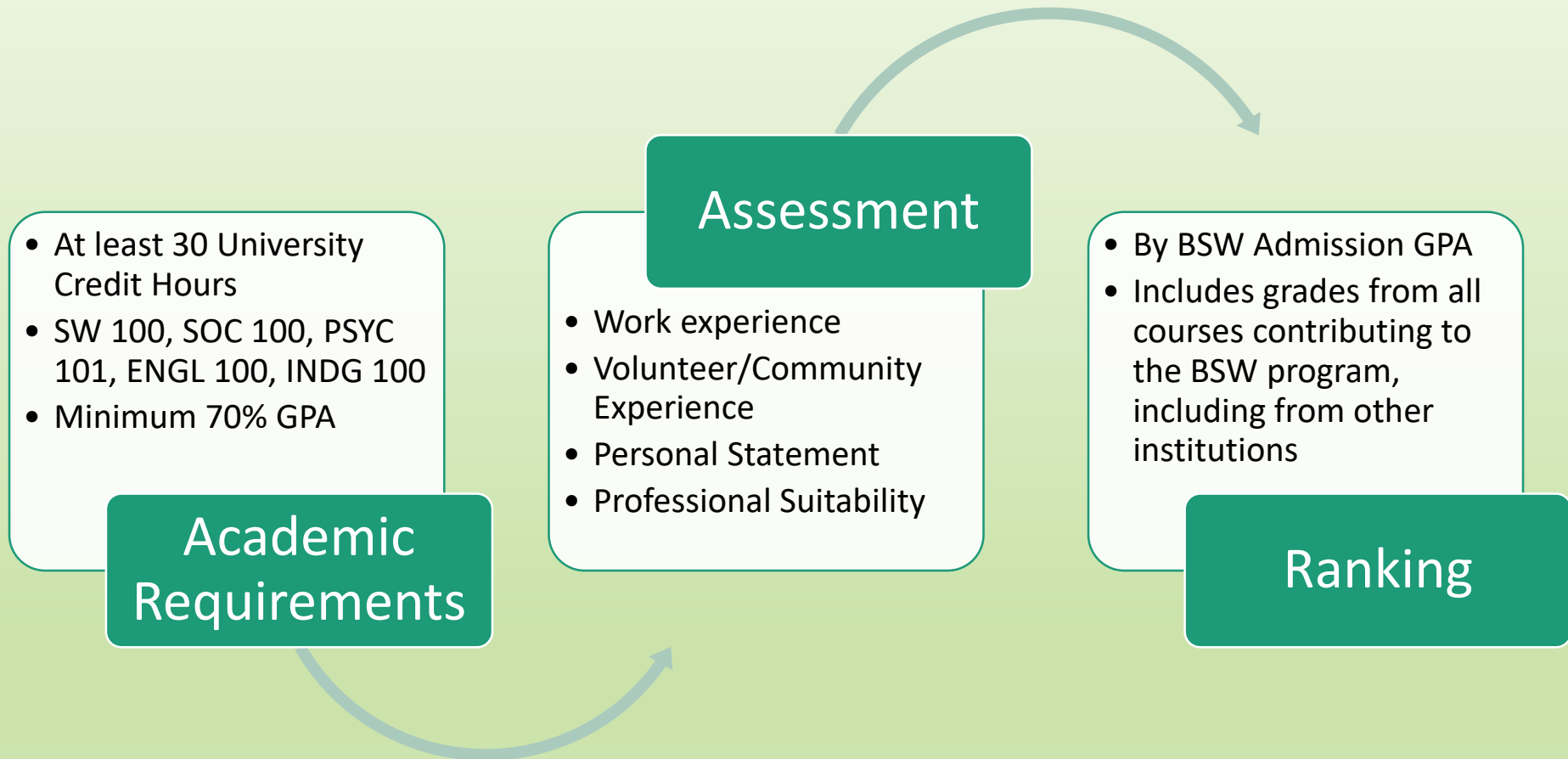
(15 Credit Hours)

Apply by January
15th to the BSW

Conditional Admission

If you will complete 30 credit hours (including transfer credit) by April 30th of the application year, you may still apply to the BSW in January!! You may be considered for conditional admission.

Stages in BSW Admission



Transferable Skills

Within your BSW application, it is important that you highlight any transferable skills you have that could be applicable to your program and/or to the field of social work. Examples of transferable skills include:

Communication

Advocacy

Conflict Resolution

Active Listening

Critical Thinking

Setting Boundaries

Empathy



GPA Calculation

For BSW Admission:

- We use grades from all courses contributing to the BSW, from the U of R & other institutions attended (grades are converted to the U of R grading system);
- This may include failing grades;
- We do not round up or down, for example: 69.75 is not rounded up to 70%.

Transcripts

During the BSW admission process, we review applicants' transcripts from all post-secondary institutions attended.

- Applicants must ensure to submit their up-to-date, official transcripts as part of the application process.
- Transcripts must show grades for all courses completed up until the BSW Application deadline date of January 15th.
- For those applying for conditional admission, transcripts (or an additional confirmation of enrollment) must also show courses in progress for the Winter term (January to April).

Note: if the University of Regina has already received the most recent version of an applicant's official transcript, the applicant is not required to re-submit the transcript.

Transferring Credits

Please review the transfer credit equivalents database on the U of R website to get a sense of the transferability of your courses prior to applying to the BSW program.

If your courses from another institution have not been assessed at the U of R, they will not appear in the database. In this case, we may request detailed course syllabi (course outlines) to determine your transferable credits. Please allow up to **3 months** for a full transfer credit assessment, if syllabus review is required.

It is recommended that you apply for admission to Pre-Social Work the semester before the BSW application deadline, to ensure we can evaluate your courses in time.

You are also encouraged to connect with an academic advisor in the Faculty of Social Work to discuss transferring credits for admission to the BSW program.

END OF VIDEO

Your next step is to attend a '**BSW Application Preparation Session**', which will cover everything you need to know to apply to the BSW!

Sessions are typically held between October and December, with a variety of options for days/times - students are only required to attend one. Session times & sign-up information will be located on our online events calendar, beginning in late September.