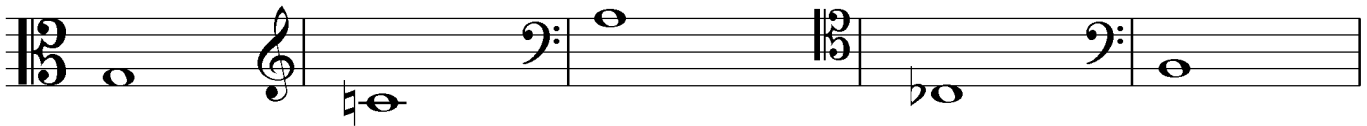
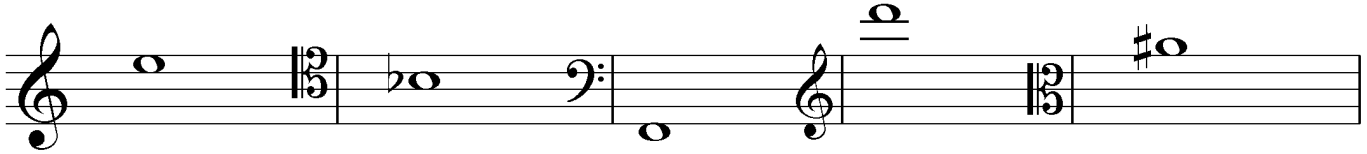


Name: _____

Part II. Pitch and Clef: note naming in four clefs

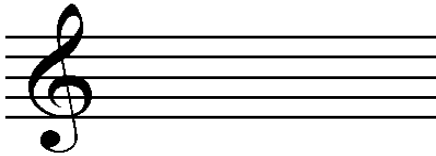
Identify the given notes with both the letter name and the octave number under each measure. (10 marks)



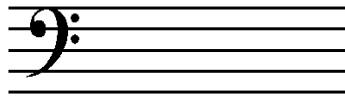
Part III. Key signatures: major and minor

Complete the key signature with the appropriate sharps or flats in the given clef. (10 marks)

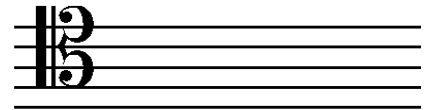
1) A Major



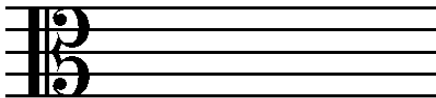
2) E Major



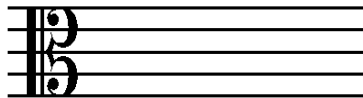
3) C# Major



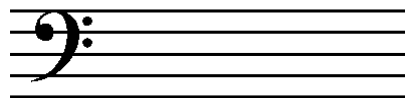
4) G minor



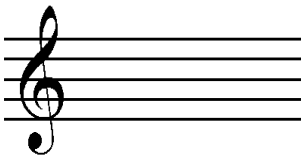
5) Ab minor



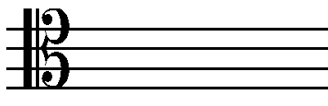
6) B Major



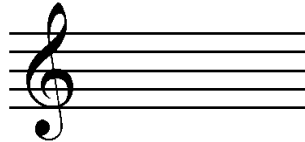
7) G# minor



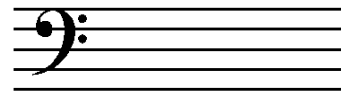
8) C minor



9) Cb major



10) F minor

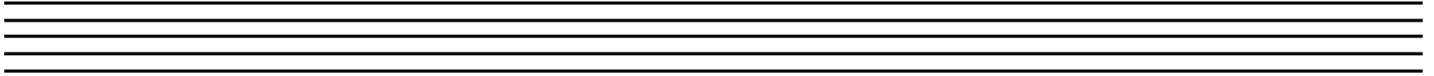


Name: _____

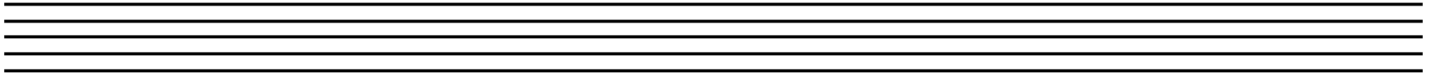
IV. Scales: major; natural, melodic, and harmonic minor

Choose a clef and write out the following scales, ascending and descending. Include a key signature and only use accidentals when necessary. (12 marks)

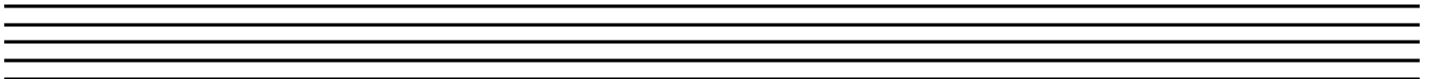
1) D Major Scale

A set of five horizontal lines representing a musical staff, intended for writing the D Major Scale.

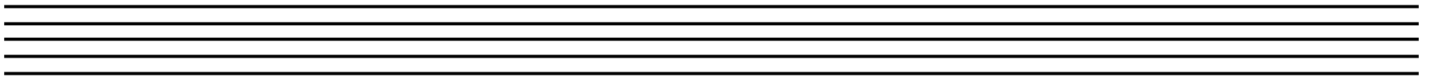
2) Db Major Scale

A set of five horizontal lines representing a musical staff, intended for writing the Db Major Scale.

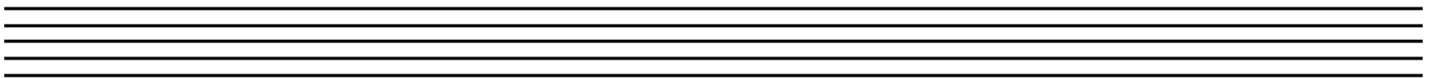
3) D# natural minor scale

A set of five horizontal lines representing a musical staff, intended for writing the D# natural minor scale.

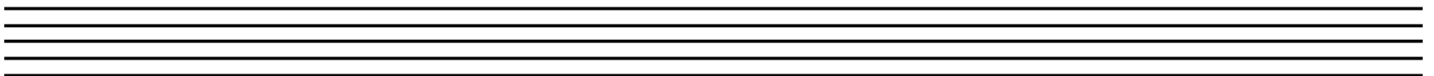
4) A harmonic minor scale

A set of five horizontal lines representing a musical staff, intended for writing the A harmonic minor scale.

5) C melodic minor scale

A set of five horizontal lines representing a musical staff, intended for writing the C melodic minor scale.

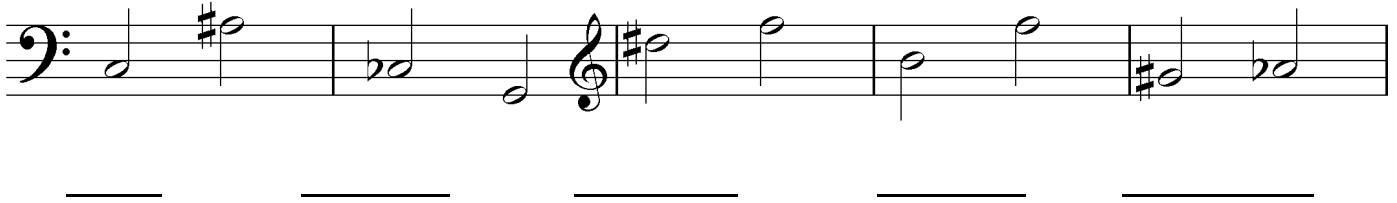
6) Eb melodic minor scale

A set of five horizontal lines representing a musical staff, intended for writing the Eb melodic minor scale.

Name: _____

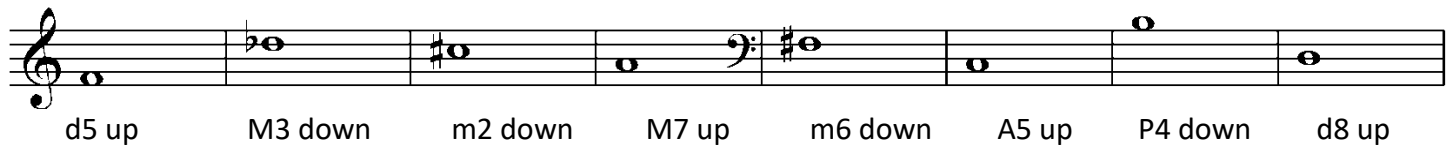
V. Intervals: identification and writing

1. Identification: Identify the intervals given below, using both interval quality (major, minor, augmented, diminished, perfect) and the interval number. (5 marks)



A musical staff with five measures. The first measure is in bass clef and contains two notes: C2 and D#2. The second measure is in bass clef and contains two notes: E2 and D2. The third measure is in treble clef and contains two notes: E3 and D#3. The fourth measure is in treble clef and contains two notes: F3 and E3. The fifth measure is in treble clef and contains two notes: G#3 and F3. Below each measure is a horizontal line for the answer.

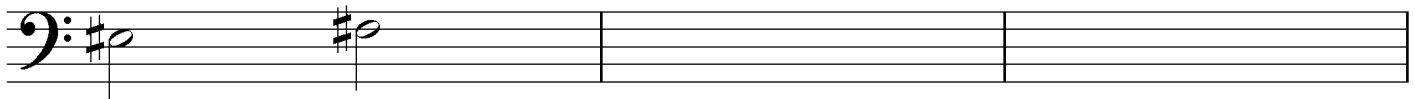
2. Writing intervals: write a note next to the given note according to the specified interval. (8 marks)



A musical staff with eight measures. Each measure contains a single note and a label below it: 1) Treble clef, C4, label 'd5 up'; 2) Bass clef, B3, label 'M3 down'; 3) Treble clef, D#4, label 'm2 down'; 4) Bass clef, G2, label 'M7 up'; 5) Bass clef, E2, label 'm6 down'; 6) Treble clef, A4, label 'A5 up'; 7) Treble clef, F4, label 'P4 down'; 8) Bass clef, C3, label 'd8 up'.

3. Enharmonically equivalent intervals: fill in the measures based on the instructions for each given below

- 1) Identify the given interval. (1 mark)
- 2) Invert the given pitches and identify the new interval. (2 marks)
- 3) Rewrite the original interval but change one pitch to its enharmonic equivalent, then identify the new interval. (2 marks)



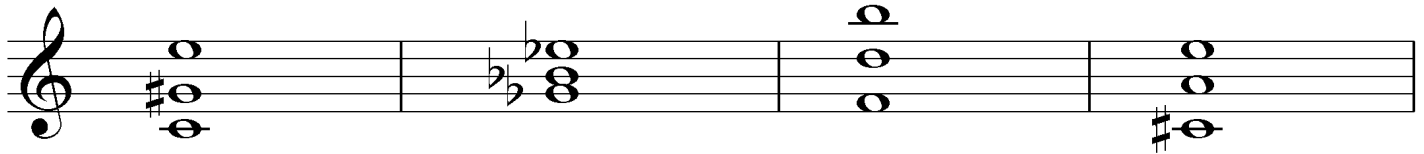
A musical staff in bass clef with a key signature of one sharp (F#). The first measure contains two notes: C2 and D#2. The second and third measures are empty for the student to write.

1) Given interval: _____ 2) Inverted interval: _____ 3) Enharmonic interval: _____

Name: _____

Part VI. Chords: identification and writing

1. Identification of triads - identify the triads below. Give the root, quality and inversion for each. (12 marks)



Root: _____

Quality: _____

Inversion: _____

2. Writing triads and Dominant seventh chords – write out the chords indicated. Choose a clef. The note given is the root. (18 marks)

C Major Cb Major F Major Bb minor Eb minor A minor

D Augmented F Augmented Db Augmented E diminished B diminished G diminished

F7 Bb7 E7 C half dim. 7 (c°7) g m7 F# dim. 7 (f#°7)
