

# MSW Practicum



## Course Work

SW 880  
SW 881  
4 SW Electives

## Thinking about possible supervisor

Around the time of taking your 4th course

Attend MSW Seminars to meet and network with faculty

Thoroughly read the Practicum Manual

## Practicum Proposal

Work with your academic supervisor in formulating a committee, finding a placement, and preparing a proposal for approval

Approach potential supervisor or make appointment with Associate Dean and MSW Program Advisor

## Practicum

Once proposal has been approved, registration into practicum will be allowed

Can be completed full time over one semester or part time over two semesters

## Practicum Hours

After successful completion of practicum, the next few semesters will be spent:

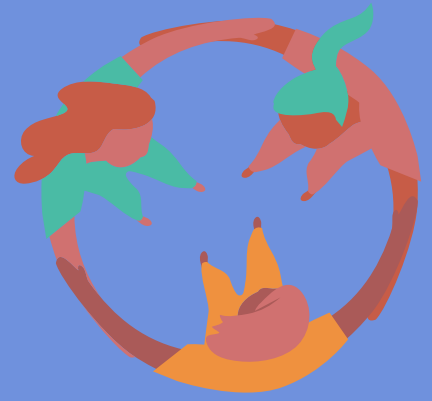
Writing draft report  
Completing edits  
Practicum presentation  
Final practicum report

## Submit Final Report and Supporting Forms

TO Associate Dean of Research and Graduate Program  
Fall Semester - Oct 31  
Winter Semester - March 31  
Spring/Summer Semester - July 31

FOR MORE DETAILS, VISIT  
<https://www.uregina.ca/socialwork/MSW/index.html>

# MSW Thesis



## Course Work

SW 880  
SW 881  
3 SW Electives

## Thinking about possible supervisor

Around the time of taking your 3rd course

Attend MSW Seminars to meet and network with faculty

Thoroughly read the Thesis Manual

## Thesis Proposal (SW 885)

Work with your academic supervisor in formulating a committee and working on thesis proposal

Thesis proposal must be successfully defended by end of semester enrolled in SW 885

Approach potential supervisor or make appointment with Associate Dean and MSW Program Advisor

## Thesis Hours (SW 901)

After successful defense of thesis proposal, the next few semesters will be spent:

Writing thesis  
Research  
Completing edits

## Thesis Defense

In final credit hours of SW 901, preparation and thesis defense will take place

FGSR has extensive step by step process outlined here;

[https://www.uregina.ca/gradstudies/current-students/Thesis\\_and\\_Defense/index.html](https://www.uregina.ca/gradstudies/current-students/Thesis_and_Defense/index.html)

## Submit Final Thesis and Supporting Forms

[https://www.uregina.ca/gradstudies/current-students/Thesis\\_and\\_Defense/Timelines\\_and\\_Deadlines.html](https://www.uregina.ca/gradstudies/current-students/Thesis_and_Defense/Timelines_and_Deadlines.html)

FOR MORE DETAILS, VISIT  
<https://www.uregina.ca/socialwork/MSW/index.html>